



Quality Metals

ROOF AND WALL SYSTEMS

- Mechanically seamed systems.
- Heavy resistance and durability.
- Weathertight systems.
- Fixed and floating attachment clips.
- Installation over metal deck, open framing and wood sheathing.

STANDING SEAM ROOF SYSTEMS



www.saqualitymetals.com

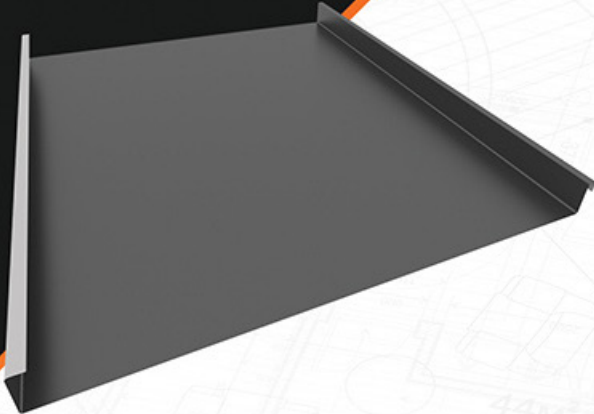
ML-100

1 MECHANICAL LOCK

1" Mechanically field seamed, high strength Structural Standing Seam Roof System.



1" PANEL



The Mechanical Lock features a structural performance and architectural aesthetic in **ML-100 (1" High)**. The **ML-100** can be manufactured on job sites for various substrates. Concealed fasteners with a fixed floating clip system reduce the effect of thermal stresses on the **ML-100 panel system**, helping to maintain a unique smooth, uniform appearance despite fluctuations in temperature.

ML-100 is a mechanically seamed, vertical leg standing seam roof system that combines a 1" tall slim rib with exceptional uplift resistance. It is available in 21-inch max width.

ML-100 has been designed to withstand the most rigorous weather conditions.

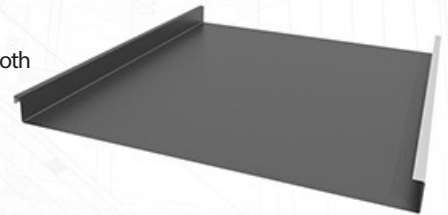
FEATURES

- 24 GA steel.
- Colors available on standard, premium and metallic.
- Curved available.
- On site or factory made.
- Available in smooth, striated and stiffener ribs.
- UL Construction Number: **TGKX575, TGKX602**.
- Uplift resistance of prepared roof-covering materials **UL 580 Class90**.
- Impact resistance of prepared roof-covering materials **UL2218 Class 4**.
- Fire tests of roof coverings **UL 790. Class A, B, C**. External fire exposure.
- TDI Approved.

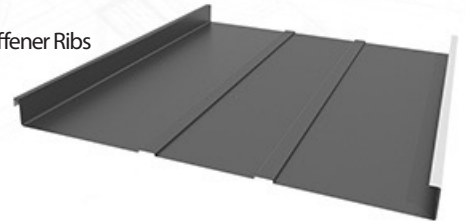
PRODUCT SPECIFICATIONS

- **Applications:** Roof and Wall
- **Coverage Widths:** 21" Max.
- **Minumum Slope:** 1/2:12
- **Panel Attachment:** Standing Seam System, clip fixed.
- **Gauges:** 24 (standard), 22 and 26 (optional)
- **Coatings:** Galvalume®, Storm Armor (Durapon 70®, Ceranamel®).
- **Substructure:** Plywood or OSB to be a nominal 5/8 inch thick.

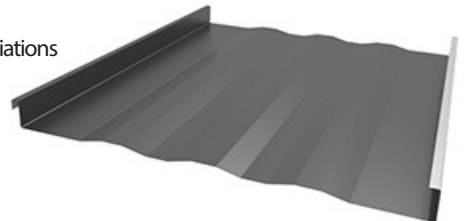
Smooth



Stiffener Ribs



Striations



Curved



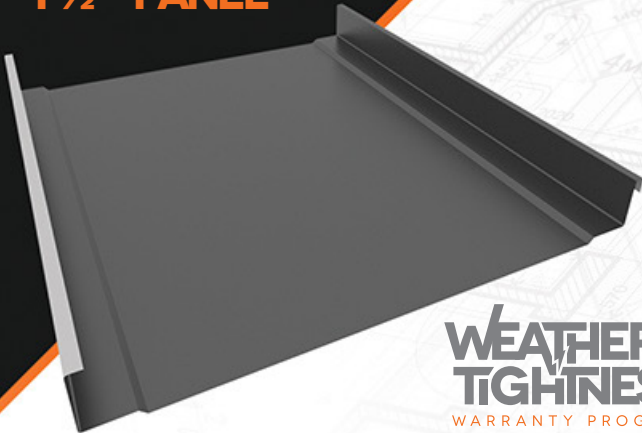
ML-15Q

1.5 MECHANICAL LOCK

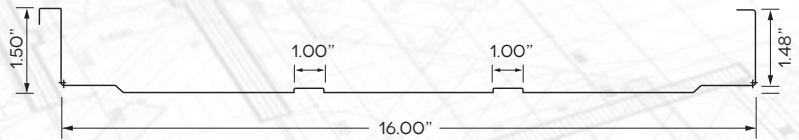
1½" Mechanically field seamed, high strength Structural Standing Seam Roof System.



1 ½" PANEL



**WEATHER
TIGHTNESS**
WARRANTY PROGRAM
AVAILABLE FOR THIS PRODUCT



The **ML-150 Mechanical Lock (1.5" High Standing Seam)** features structural performance and architectural aesthetics. The **ML-150** can be manufactured on job sites for various substrates and uses concealed fasteners with a fixed and/or floating clip system. The floating clip system reduces the effects of thermal stresses on the **ML-150** panel system, maintaining a unique smooth, uniform appearance, despite fluctuations in temperature.

ML-150 Mechanical Lock Panel is a mechanically seamed, vertical leg standing seam roof system that combines a 1.5" tall slim rib with exceptional uplift resistance and is available in a 16-inch width and allows for the installation directly over purlin and bar joists.

ML-150 Panels are designed to withstand the most rigorous weather conditions.

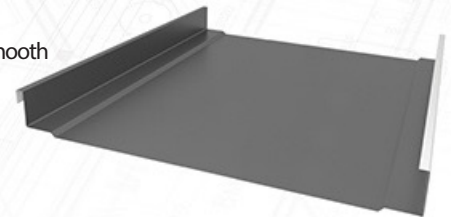
FEATURES

- 24 GA steel.
- Colors available on standard, premium and metallic.
- Curved available.
- On site or factory made.
- Available in smooth, striated and stiffener ribs.
- UL Construction Number: **TGKX5549**.
- Uplift resistance of prepared roof-covering materials **UL 580 Class90**.
- Impact resistance of prepared roof-covering materials **UL2218 Class 4**.
- Fire tests of roof coverings **UL 790. Class A, B, C**. External fire exposure.
- TDI Approved.

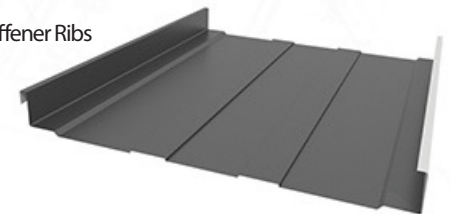
PRODUCT SPECIFICATIONS

- **Applications:** Roof and Wall
- **Coverage Widths:** 16"
- **Minumum Slope:** ½:12
- **Panel Attachment:** Standing Seam System, clip fixed and floating.
- **Gauges:** 24 (standard), 22 and 26 (optional)
- **Coatings:** Galvalume®, Storm Armor (Durapon 70®, Ceranamel®).
- **Substructure:** Plywood or OSB to be a nominal 5/8 inch thick, Open Framing and Metal Decking.

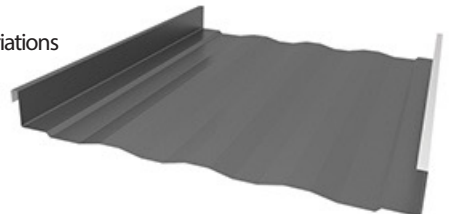
Smooth



Stiffener Ribs



Striations



Curved

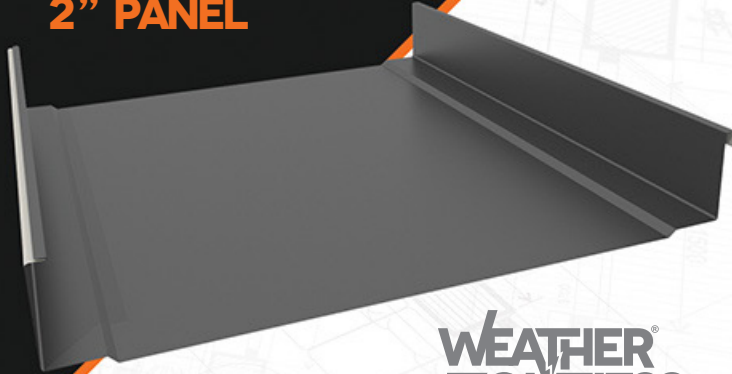


ML-200

2 MECHANICAL LOCK

1½" Mechanically field seamed, high strength Structural Standing Seam Roof System.

2" PANEL



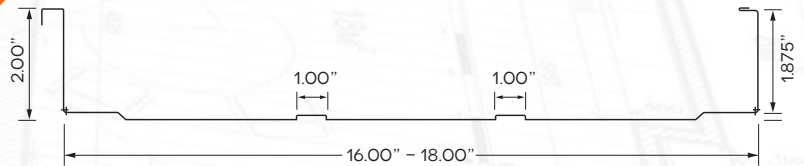
**WEATHER
TIGHTNESS**
WARRANTY PROGRAM
AVAILABLE FOR THIS PRODUCT

FEATURES

- 24 GA steel.
- Colors available on standard, premium and metallic.
- On site or factory made.
- Available in smooth, striated and stiffener ribs.
- UL Construction Number: TGKX90, TGKX180, TGKX180, TGKX238, TGKX238A, TGKX238B, TGKX298, TGKX437, TGKX449, TGKX451, TGKX452, TGKX482, TGKX487, TGKX633 and TGKX639.
- Uplift resistance of prepared roof-covering materials UL 580 Class90.
- Impact resistance of prepared roof-covering materials UL2218 Class 4.
- Fire tests of roof coverings UL 790. Class A, B, C. External fire exposure.
- TDI Approved.

PRODUCT SPECIFICATIONS

- **Applications:** Roof and Wall
- **Coverage Widths:** 16" and 18"
- **Minimum Slope:** ½:12
- **Panel Attachment:** Concealed Fastening System, Clip Needed.
- **Gauges:** 24 (standard), 22 and 26 (optional)
- **Coatings:** Galvalume®, Storm Armor (Durapon 70®, Ceranamel®).
- **Substructure:** Plywood or OSB to be a nominal 5/8 inch thick, Open Framing and Metal Decking.

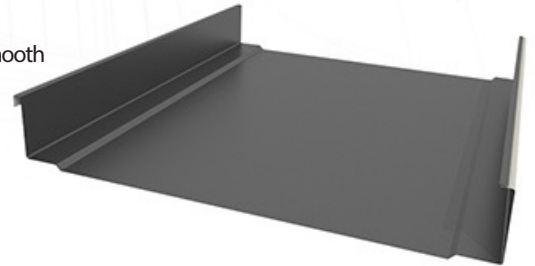


The **ML-200 Mechanical Lock (2" High Standing Seam)** features structural performance and architectural aesthetics. The **ML-200** Panels can be manufactured on job sites for various substrates and uses concealed fasteners with a fixed and/or floating clip system. The floating clip system reduces the effects of thermal stresses on the **ML-200** panel system, maintaining a unique smooth, and uniform appearance, despite fluctuations in temperature.

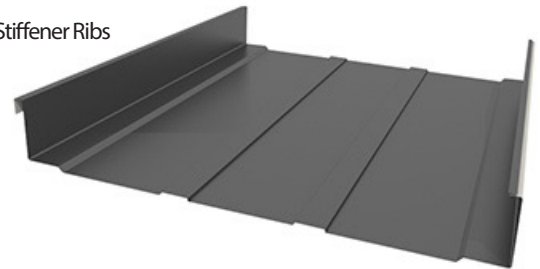
ML-200 Mechanical Lock Panel is a mechanically seamed, vertical leg, standing seam roof system that combines a 2" tall slim rib with exceptional uplift resistance and is available in 16-inch and 18-inch widths and allows for the installation directly over purlins and bar joists.

ML-200 Panels are designed to withstand the most rigorous weather conditions.

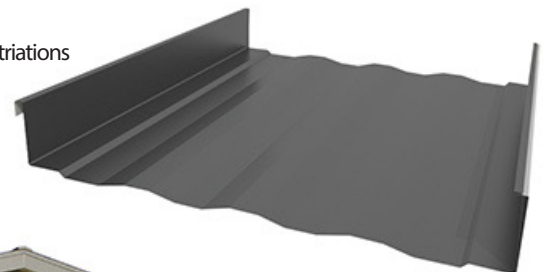
Smooth



Stiffener Ribs



Striations



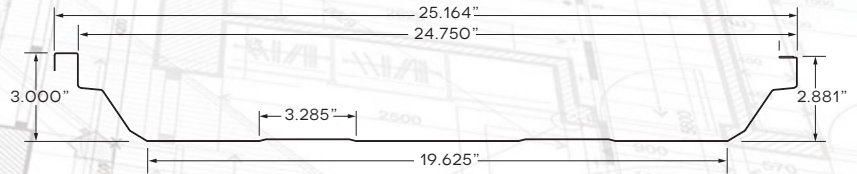
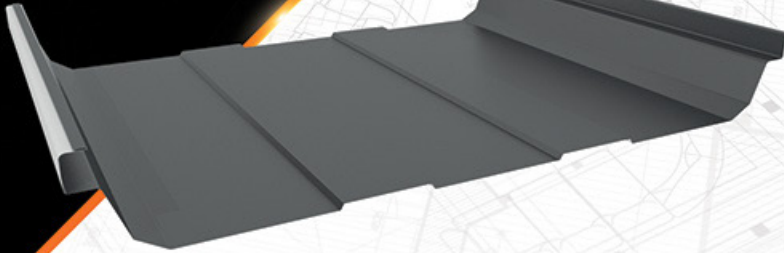
ML-300

TRAPEZOIDAL PANEL



Mechanically seamed, trapezoidal leg, high strength structural standing seam system.

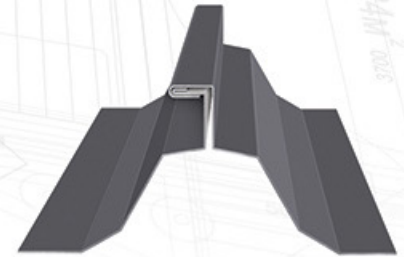
3" PANEL



The ML-300 features structural performance and architectural aesthetics in ML-300 (3" High). The ML-300 can be manufactured on job sites for all substrates and uses concealed fasteners with a floating clip system. The floating clip system reduces the effect of thermal stresses on the ML-300 panel system, maintaining a unique smooth, uniform appearance despite fluctuations in temperature.

ML-300 is a mechanically field-seamed, vertical leg standing seam roof system that combines a 3" tall slim rib with exceptional uplift resistance. It is available in 24 $\frac{3}{4}$ inch width. ML-300 has been designed to withstand the most rigorous weather conditions.

ML-300 can be installed directly over purlins or bar joists.



PANEL JOINTS 90° SEAMED



PANEL JOINTS 180° SEAMED

FEATURES

- 24 GA steel
- Colors available on standard, premium and metallic.
- On site factory made.
- UL Construction Numbers: TGKX.180C, TGKX.287, TGKX.308A, TGKX.539.
- Uplift resistance of prepared roof-covering materials is UL2218 Class 90.
- Impact resistance of prepared roof-covering materials UL2218 Class 4.
- Fire tests of roof coverings UL790. External fire exposure.
- TDI approved.

PRODUCT SPECIFICATIONS

- Applications: Roof
- Coverage Widths: 24 $\frac{3}{4}$ "
- Minimum Slope: $\frac{1}{4}$:12
- Panel Attachment: Standing Seam System, Low, High (floating).
- Gauges: 24 (standard); 22 and 26 (optional)
- Finishes: Stiffener Ribs.
- Coatings: Galvalume®, Storm Armor (Durapon 70®, Ceranamel®).



WEATHER TIGHTNESS

WARRANTY PROGRAM

AVAILABLE FOR THIS PRODUCT



**WEATHER
TIGHTNESS**
WARRANTY PROGRAM

SAN ANTONIO

2707 Castroville Rd
San Antonio, TX 78237
(210) 227-7276

MCALLEN

2221 Austin Ave,
McAllen, TX 78501
(956) 627-2966

HOUSTON

6460 Langfield Rd,
Houston, TX 77092
(713) 944-4480

DALLAS

11569 Goodnight Lane,
Dallas, TX 75229
(972) 331-6800

www.saqualitymetals.com