

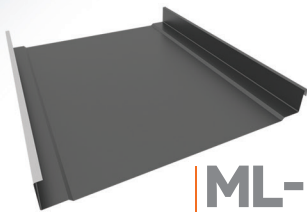
Quality Metals provides **Weathertightness** warranties on select standing seam systems. Our carefully designed procedures and specifications ensure building owners enjoy a long-lasting, hassle-free roofing solution with complete peace of mind.

To obtain a **QM Weathertightness Warranty**, follow these steps:

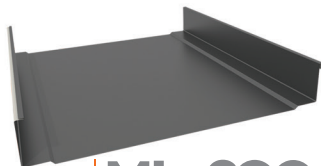
- Submit project plans for review.
- **QM** prepares a **take-off** based on the provided plans or roof report.
- Review and approve the **take-off** on-site, ensuring that measurements, accessories, and trims align with the actual project.
- Approve the price quote to proceed.
- Develop shop drawings according to project specifications.
- Review and approve shop drawings to ensure accuracy.
- **Three roof inspections** (beginning, middle, and final), addressing any necessary adjustments.

WARRANTABLE PANELS

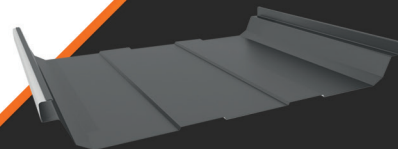
(Installed on plywood, open framing, or metal decking)



ML-15Q
1.5 MECHANICAL LOCK



ML-20Q
2 MECHANICAL LOCK



ML-30Q
TRAPEZOIDAL PANEL



Professional Roof Take-Off Services

The Engineering Department at Quality Metals will deliver a detailed list of all required materials, including panel cut lists, trim sections, and accessories, ensuring a seamless and efficient installation process.



Shop Drawings & Engineering Services

Quality Metals' Engineering Department specializes in creating precise shop drawings for each project. These drawings include detailed installation instructions, carefully tailored to the project's specific requirements. Every screw, cut, and construction detail is meticulously considered to ensure accuracy and efficiency.



**WEATHER
TIGHTNESS**
WARRANTY PROGRAM



Inspection Report

Our Inspection Report provides a thorough assessment of the roofing system at various stages of installation. It includes detailed observations, identifies potential issues, and outlines any corrective actions required to ensure the project meets the highest quality and safety standards.





**WEATHER
TIGHTNESS**
WARRANTY PROGRAM



QUALITY METALS WEATHER-TIGHTNESS WARRANTY

| Warranty Term | Limited | NDL |
|----------------|---------------|---------------|
| 5 Years | .19 per Sq/Ft | .32 per Sq/Ft |
| 10 Years | .21 per Sq/Ft | .35 per Sq/Ft |
| 20 Years | .25 per Sq/Ft | .39 per Sq/Ft |
| Minimum Charge | \$3,500.00 | \$4,100.00 |

**The cost of shop drawings is separate and follows distinct guidelines for pricing, which are determined based on the specific requirements of the project.*

The **Weathertightness Warranty** provided by **Quality Metals** is subject to the following terms and conditions:

Eligibility: The warranty is available only for select projects and is not applicable to all roofing contractors or installers. The warranty will be issued only after the project has been fully paid for, and all inspections, repairs, and corrections identified in the final inspection report have been addressed and completed.

Completion of Work: The roofing company or installer is required to perform all necessary repairs and fixes outlined in the final inspection report to ensure that the roofing system meets the quality and performance standards expected under this warranty. All work must be completed according to the provided shop drawings and installation instructions.

Any deviations from these instructions will void the warranty, as it is crucial that the system is installed as designed.

Liability Coverage: Upon issuance of the Weathertightness Warranty, the roofing company or installer will provide liability coverage for a period of five (5) years, ensuring that the roofing system continues to perform as expected during this period.

Inspections: A total of **three inspections** are required at the following stages: beginning, middle, and final.

Any **additional inspections** required for performance issues or concerns beyond the standard three will incur an additional charge for each inspection.

Limitations: The warranty is contingent upon proper installation, regular maintenance, and the use of approved materials. Any modifications to the roofing system or use of unauthorized materials may void the warranty.

Exclusions: This warranty does not cover damages resulting from extreme weather events, improper maintenance, or misuse of the roofing system.

Transferability: The warranty is non-transferable and applies only to the original property owner or building during the warranty period.



SAN ANTONIO 2707 Castroville Rd • San Antonio, TX 78237 • (210) 227-7276 • Fax (210) 227-0329
MCALLEN 2221 Austin Ave • McAllen, TX 78501 • (956) 627-2966 • Fax (956) 627-0918
DALLAS 11569 Goodnight Lane • Dallas, TX 75229 • (972) 331 6800 • Fax (972) 331 6803
HOUSTON 6460 Langfield Road • Houston, TX 77092 • (713) 944-4480 • Fax (713) 944-4430